

CASING AND CEMENTING REPORT

WELL: **Childers Cove 1**

SUPERVISOR: **S.Porter / B.Webb**

DATE: **21/09/05**

CASING DETAILS

Size (")	9 5/8	Weight (ppf)	36	Grade	K-55	Landed depth (mRT)	544.5	Av. Length	12.02	Collapse (psi)	2020	Burst (psi)	3520
Joints on location	45	No. of joints run	45	Joints in shoe track	1	Float shoe (Y/N)	Y	Float collar (Y/N)	Y				
Final displ. (psi)	517	Buoyed wt. (kLb)	55	Set weight (kLb)	19	Displ. (Bbls)	23	Coupling	BTC				

PRE JOB CIRCULATION

Pump 1 (spm)		Pump 2 (spm)	100	Pressure	300	Time (mins)	40	Vol. Pumped (Bbls)	288	Mud wt (ppg)	9.0
--------------	--	--------------	------------	----------	------------	-------------	-----------	--------------------	------------	--------------	------------

PRE-FLUSH

Volume (Bbls)	20	Wt(ppg)	8.34	Hyd. Loss (psi)	12	Additives:		Kg		Kg	
---------------	-----------	---------	-------------	-----------------	-----------	------------	--	----	--	----	--

TAIL SLURRY

Wt(ppg)	15.8	Class	G	Volume (Bbls)	56	Yield	1.16	Sacks	270	Water (g/sx)	5.10	Water (Bbls)	33	Design top	397
OH/Cal	OH	Excess (%)	95	Hole size (")	12.25	Mix (bpm)	6	Mix (psi)	200	Start	21:21	Finish	21:35		
Additives:	0.2	%	CFR-2			gals	CFR-2	55.0	lb						
		%				gals			lb						

LEAD SLURRY

Wt(ppg)	13.2	Class	G	Volume (Bbls)	140	Yield	1.81	Sacks	435	Water (g/sx)	9.62	Water (Bbls)	100	Design top	0
OH/Cal	OH	Excess (%)	70	Hole size (")	12.25	Mix (bpm)	6	Mix (psi)	180	Start	20:55	Finish	21:21		
Additives:		%	Econolite	156.0	gals	0.354 gals/sack			lb						
		%	Econolite		gals				lb						

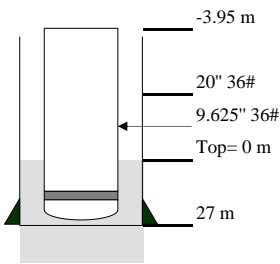
DISPLACEMENT

Fluid type	Water	Wt	8.34	Calculated (Bbls)	135	Pumped (Bbls)	139	Bump pressure (psi)	1000	Used (Rig/Unit)	Unit
Time: Start	21:35	Finish	21:58	Returns (%)	95	Top plug (Y/N)	Y	Bottom plug (Y/N)	Y	Floats held (Y/N)	Y
Pressure (psi)	Initial 150	final 630	max 630	min 150	Rate (bpm)	Initial 7.5	final 4.5	max 7.5	min 2		

LOT / FIT

OMW (ppg)	8.50	FIT (ppg)	14.42	FIT Pressure (psi)	550	Test pressure (psi)	550	EMW (ppg)	14.42
-----------	-------------	-----------	--------------	--------------------	------------	---------------------	------------	-----------	--------------

CASING RUN LIST



QTY	DESCRIPTION	LENGTH	FROM	TO
1	Float Shoe	0.44	544.06	544.50
1	Joint, 9-5/8" 36# K-55BTC R3 casing	11.86	532.20	544.06
1	Float Collar	0.31	531.89	532.20
44	Joints, 9-5/8" 36# K-55 BTC R3 casing	528.82	3.07	531.89
1	Landing Joint	7.02	-3.95	3.07